

Torque Converter



criteria:

- dismantled / incomplete
- mechanical damage
- corrosion
- external repair
- not identifiable

red frame → not acceptable

green frame → acceptable

Criteria: dismantled / incomplete



Torque converter opened / dismantled
→ not acceptable

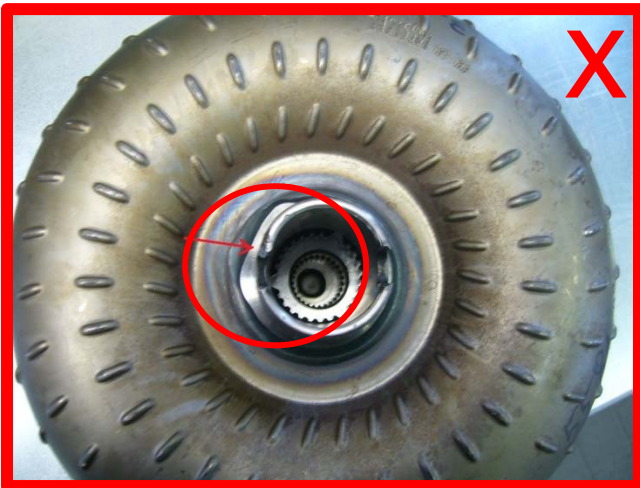


Loose parts within torque converter
(recognizable due to specific noise when
lifting/shaking)
→ not acceptable

Criteria: mechanical damage



hub broken / damaged
→ not acceptable



hub deformed
→ not acceptable



pump connector seized up on hub
→ not acceptable



housing damaged
→ not acceptable



mounting rim damaged
→ not acceptable

criteria: corrosion



slight corrosion on surface
→ acceptable



Severe corrosion, fretting corrosion
(especially on hub)
→ not acceptable

Criteria: external repair



painting due to external repair /
remanufacturing by 3rd party remanufacturer
→ not acceptable